

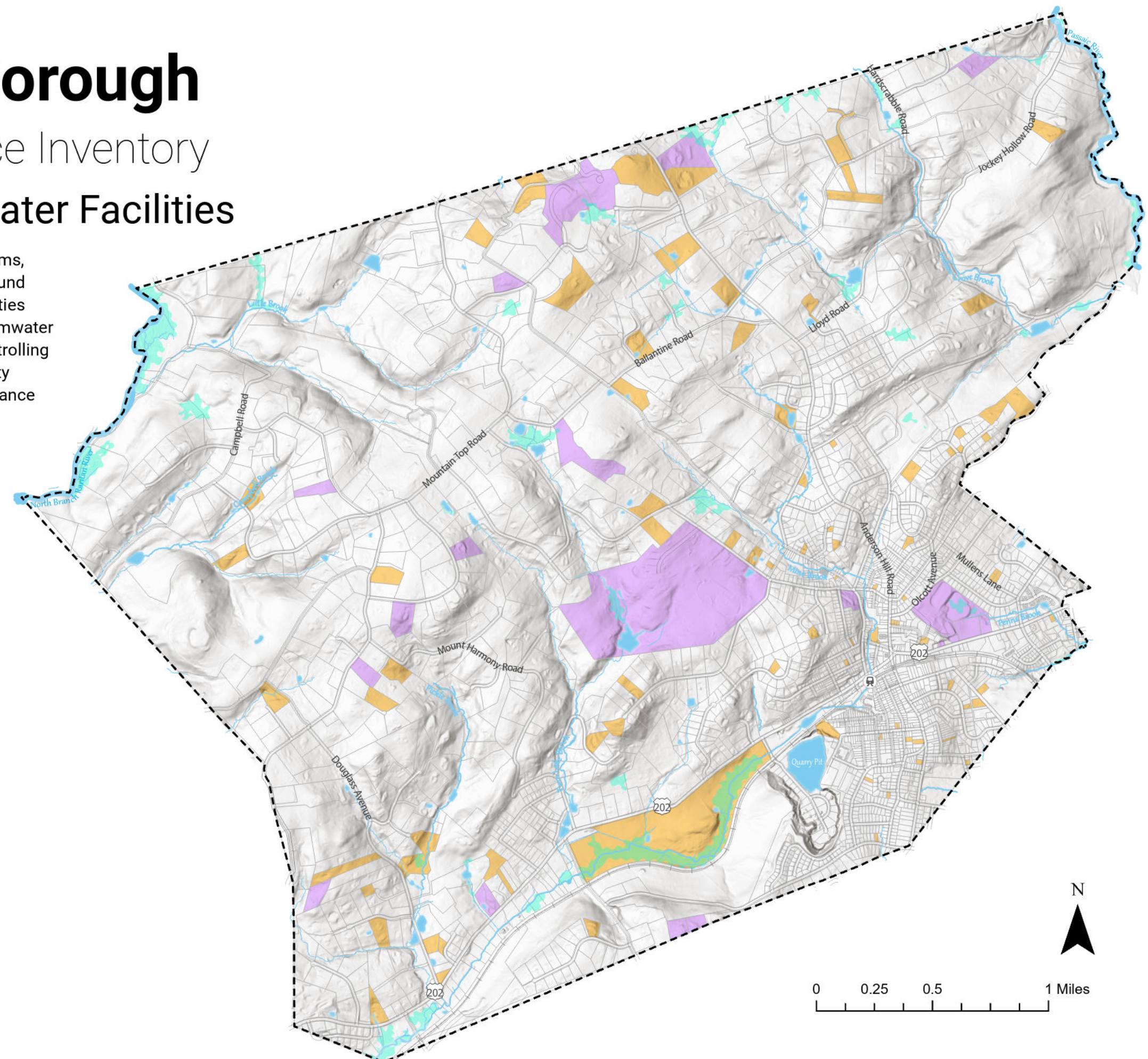
Bernardsville Borough

Environmental Resource Inventory

Privately Owned Stormwater Facilities

Privately Owned Stormwater Facilities are drainage systems, such as retention ponds, infiltration basins, and underground structures, that are owned and maintained by private entities rather than public agencies. These facilities manage stormwater runoff, reduce flooding, and improve water quality by controlling how water flows and is absorbed into the ground. Property owners are responsible for their upkeep to ensure compliance with local and environmental regulations.

- Bernardsville Borough Boundary
- 🚆 Train Station
- 🟦 Lakes & Ponds
- 🟦 Major Rivers
- 🟦 Streams
- 🟦 Tribs
- 🟦 Wetlands
- 🚶 Railroad
- 🛣️ Road
- 🏠 Parcels (2019)
- Privately Owned Stormwater Facilities
- Parcels
 - 🟪 Major (22)
 - 🟨 Minor (91)



Date: October 2024
Source: Privately Owned Stormwater Facilities, Bernardsville Boro (2025)
Parcels - NJDEP (2019)

